

# Brownside Cottage

## Henshaw, Bardon Mill, Hexham

### Disability/Access Statement

Upon arrival at Brownside you go through the wrought iron gates into a private tarmac drive which gently slopes down towards Brownside cottage.

There is designated parking for two vehicles although extra vehicles can be accommodated. The cottage is accessible for wheelchairs either via the external bedroom door which has one step or through the large gate to the right hand side of the cottage which would gain access to the kitchen door or the French doors which both have one step. The outside flat paved patio area is accessed via the French doors or the side gate, with lawned area beyond.

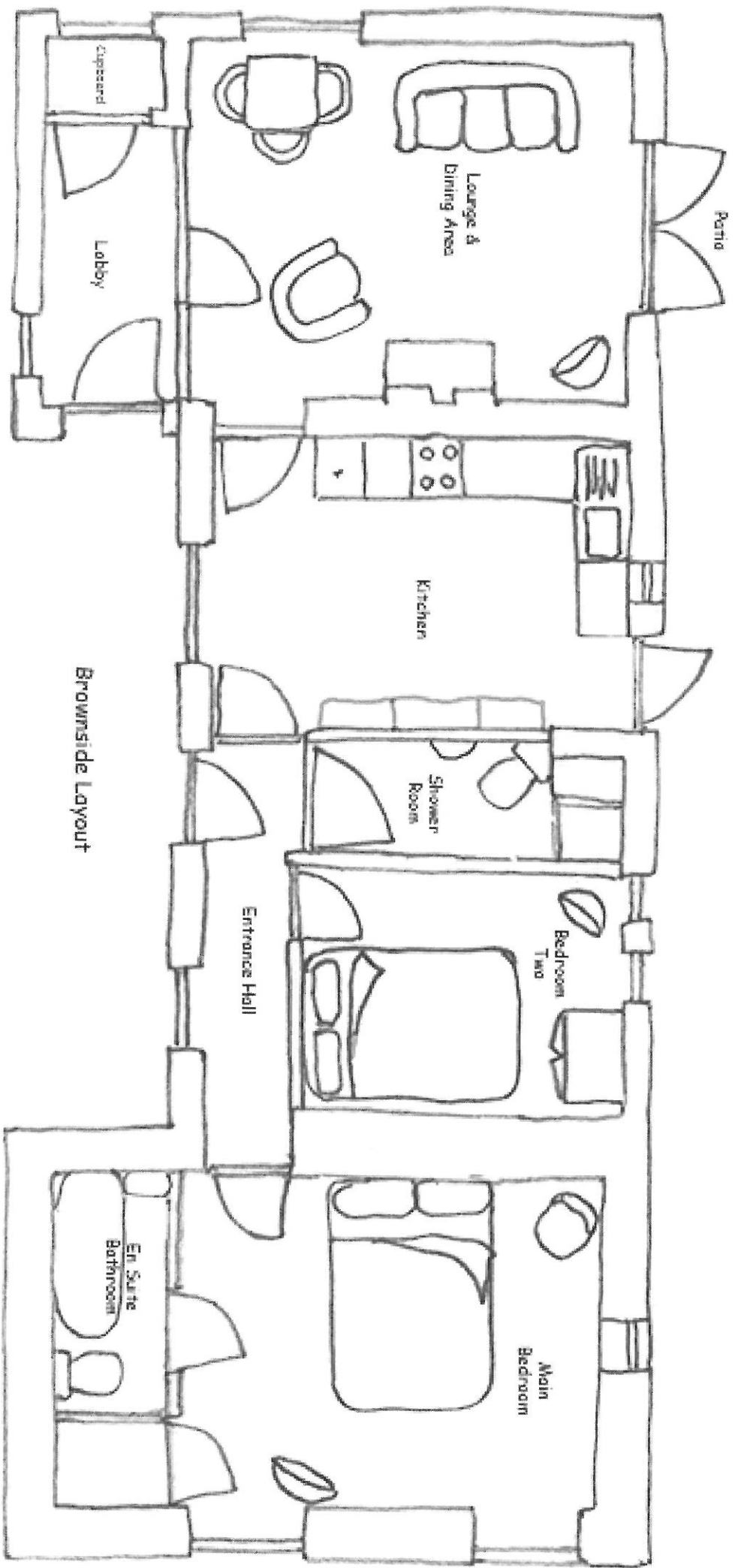
Once inside, the cottage is all on one level with no steps.

In the main bathroom the bath has been fitted with twin grips and there is a separate low level shower tray.

All doors inside the cottage are 838mm wide making them suitable for wheelchair access all as Building Regulations.

Brownside is approximately ½ mile from the nearest Newcastle to Carlisle bus stop. The buses run hourly in each direction. The Newcastle to Carlisle railway line is approximately 1 mile away. There are a limited number of trains that stop at Bardon Mill Station.

We would request any prospective guest who is planning to visit the cottage to make us aware of any mobility issues at the time of enquiry so we may be sure to correctly advise them in order to avoid any disappointment.



Brownside Layout